

cannabis

G R E E N L A



THE GREEN LAB PROJECT IS HERE

GREEN LAB is the Oyster Cosmetics project devoted to **COSMETICS INSPIRED** by **NATURE**, based on the **Research and Development of Active Ingredients** and **Innovative Substances** used by **Professionals** to perform **Holistic and Sensory Salon Rituals** that are extremely **effective** and **functional**



Hemp sativa is a real tonic for the scalp and hair.

Rich source of **nourishment** and **hydration** thanks to the presence of

Omega 3



Omega 6



Oligoelementi



Vitamine

Hemp is an environmentally-friendly and highly sustainable raw material

ACTIVE INGREDIENT: HEMP SATIVA FROM ORGANIC FARMING



HEMP SEEDS are Ideal for restoring the right level of **hydration** and **nourishment** and fortifying skin and hair.



The oil, cold pressed, provides nourishment, giving softness and absolute brightness

CANNABIS IS HERE



CANNABIS is the

REGENERATING and **REVITALIZING**

VEGAN Professional System

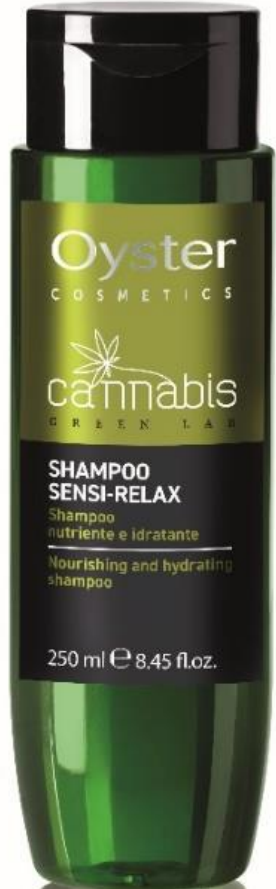
with **CANAPA SATIVA_HEMP**

for **COLORED, TREATED AND BLEACHED HAIR**

and its total well-being



THE RANGE



Shampoo
SENSI-RELAX
250ml - 1000ml



Mask
NUTRI-ENERGY
150ml - 1000 ml



Serum
FORCE-EMOTION
150ml



Oil
ILLUMINA-THERAPY
100ml



CANNABIS line for COLOURED, TREATED and BLEACHED hair



*SENSI-RELAX
Shampoo*

*NUTRI-ENERGY
Mask*

*FORCE-EMOTION
Serum*

*ILLUMINA-THERAPY
Oil*

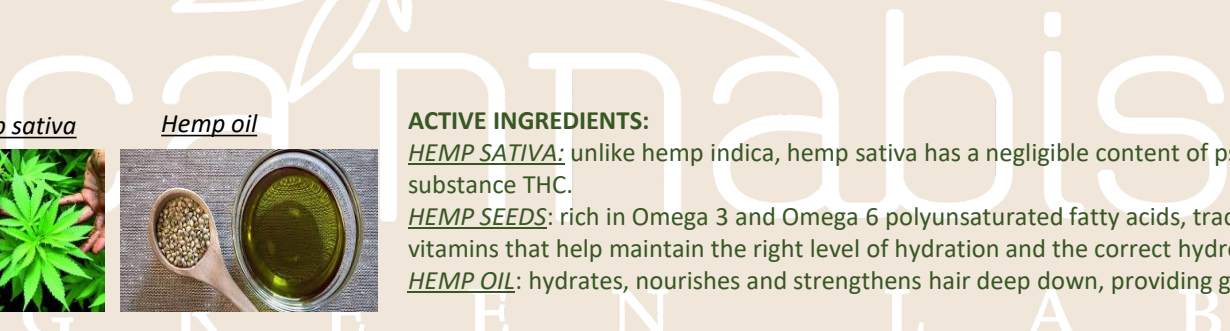
HEMP SATIVA REGENERATING - REVITALISING LINE

The properties of hemp and active ingredients provide nourishing substances, thereby regenerating hair by acting on the shaft – leaving hair looking healthy, nourished, shiny, full of body and vitamins
Transform your salon service into a global well-being experience, a relaxing moment for both the body and mind, as well as a moment to connect with your inner self, by acting on multiple levels:

- Energy
- Mind
- Body



ACTIVE INGREDIENTS:
HEMP SATIVA: unlike hemp indica, hemp sativa has a negligible content of psychotropic substance THC.
HEMP SEEDS: rich in Omega 3 and Omega 6 polyunsaturated fatty acids, trace minerals and vitamins that help maintain the right level of hydration and the correct hydrolipidic balance.
HEMP OIL: hydrates, nourishes and strengthens hair deep down, providing greater well-being.



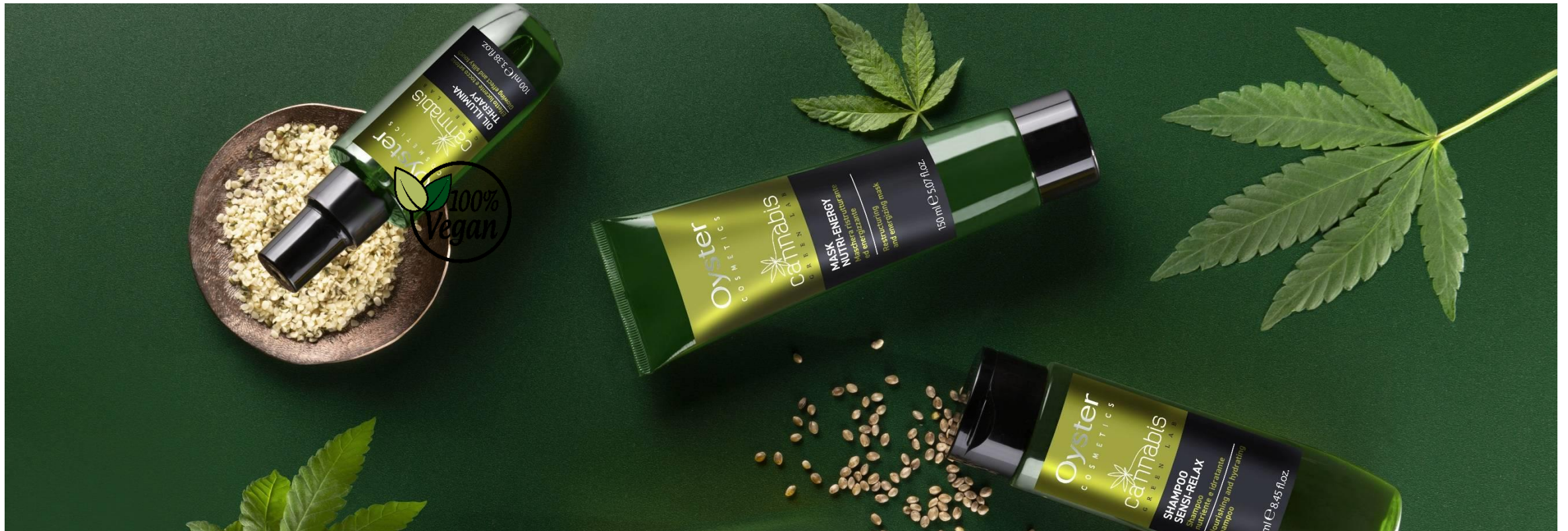
TREATED AND DAMAGED HAIR: NEED



1. The **hydrolipidic film** becomes thinner and no longer ensures a protective barrier for hair
2. The **cuticle opens** when hair is damaged and loses moisture, becoming dull and frizzy
3. The **keratin structure** is weakened and hair becomes fragile, porous and dull

TREATED AND DAMAGED HAIR: CANNABIS SOLUTION

- Provides the necessary **HYDRATION** for the hair's structure
- **RESTORES** the hydrolipidic film
- **SEALS** cuticles
- **STRENGTHENS** the keratin structure
- **REINVIGORATES** hair from roots to ends



TREATED AND DAMAGED HAIR: CANNABIS SOLUTION

THE HAIR IS REVITALIZED,
REGENERATED
AND «BORN AGAIN»



BUT not all hair is the same!

Cannabis acts differently on:

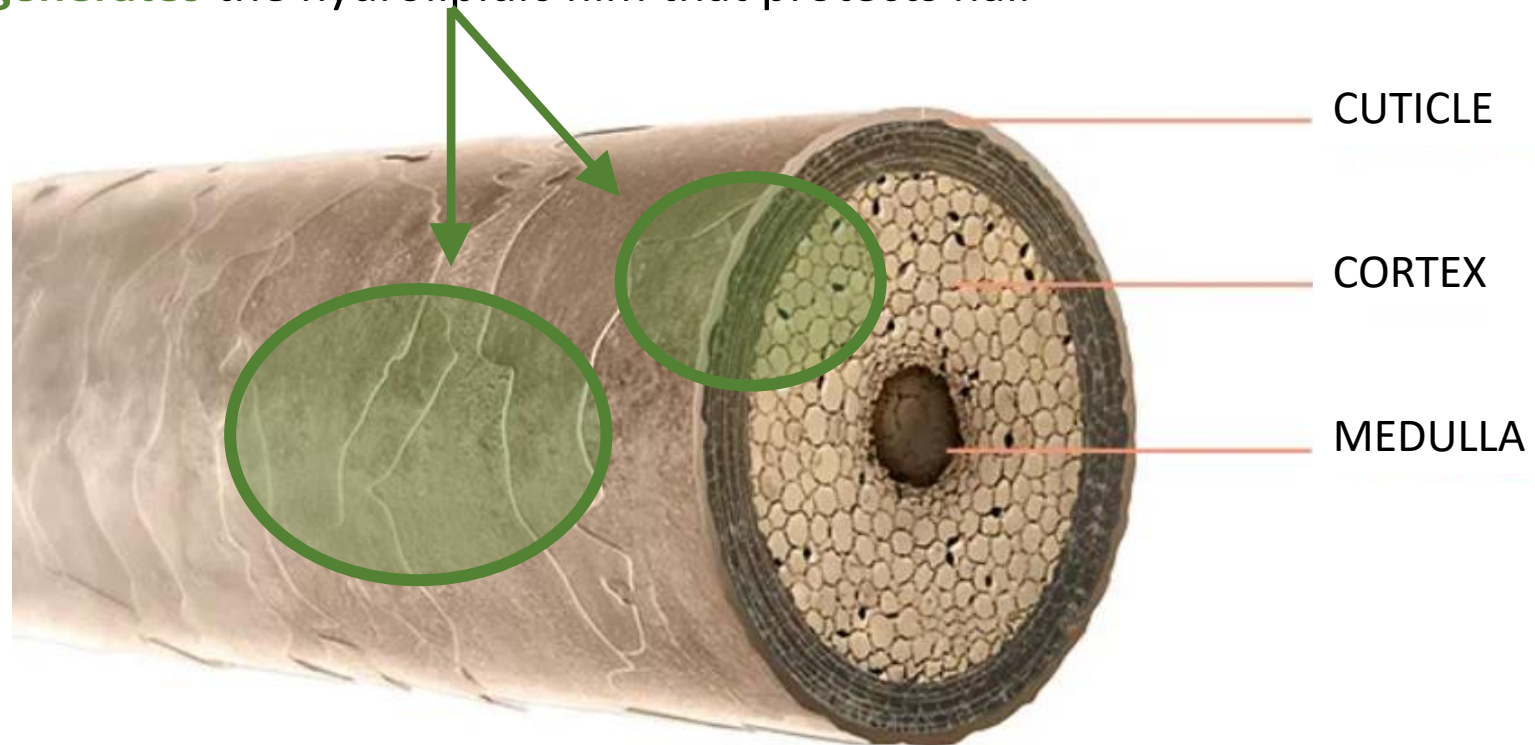
- **THIN HAIR**
- **REGULAR HAIR**
- **THICK HAIR**



THIN HAIR:

ON THIN HAIR CANNABIS PENETRATES DEEP DOWN INTO HAIR FIBRES:

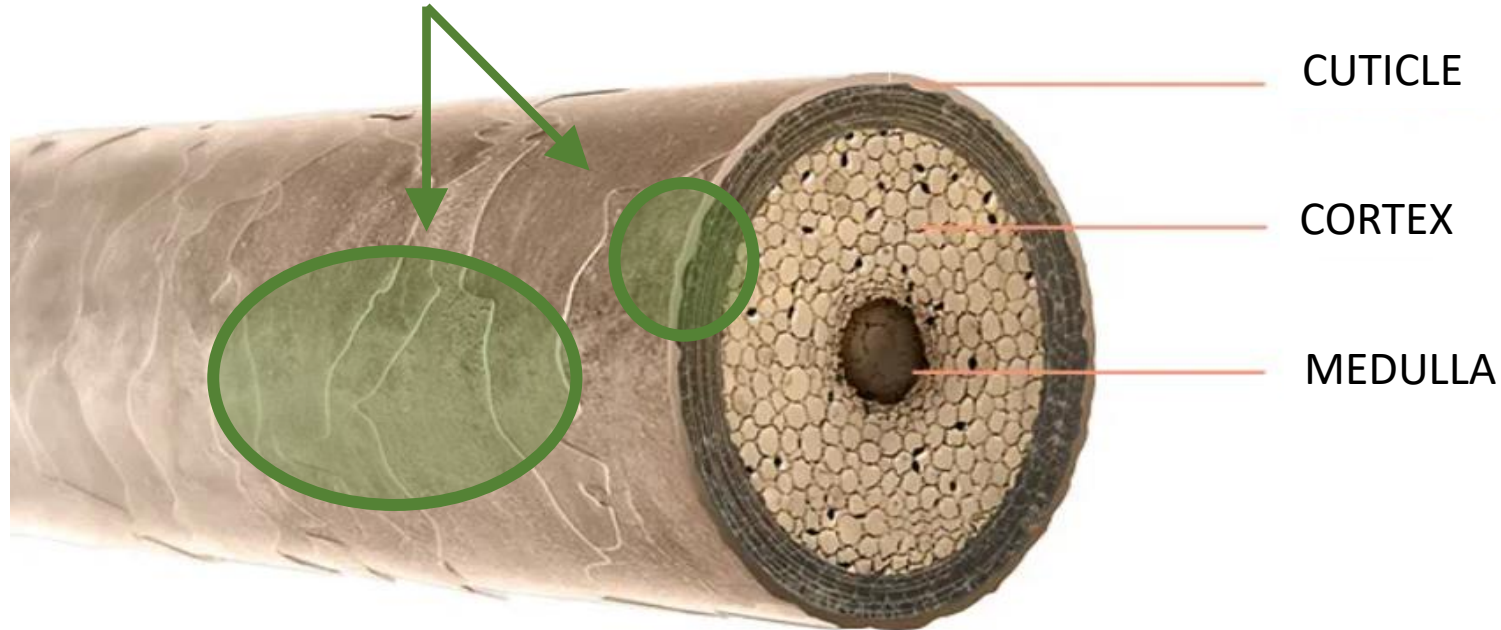
- **Strengthens** the keratin structure, adding body and vitality
- **Smoothes** all cuticle layers to provide support and volume
- **Regenerates** the hydrolipidic film that protects hair



REGULAR HAIR

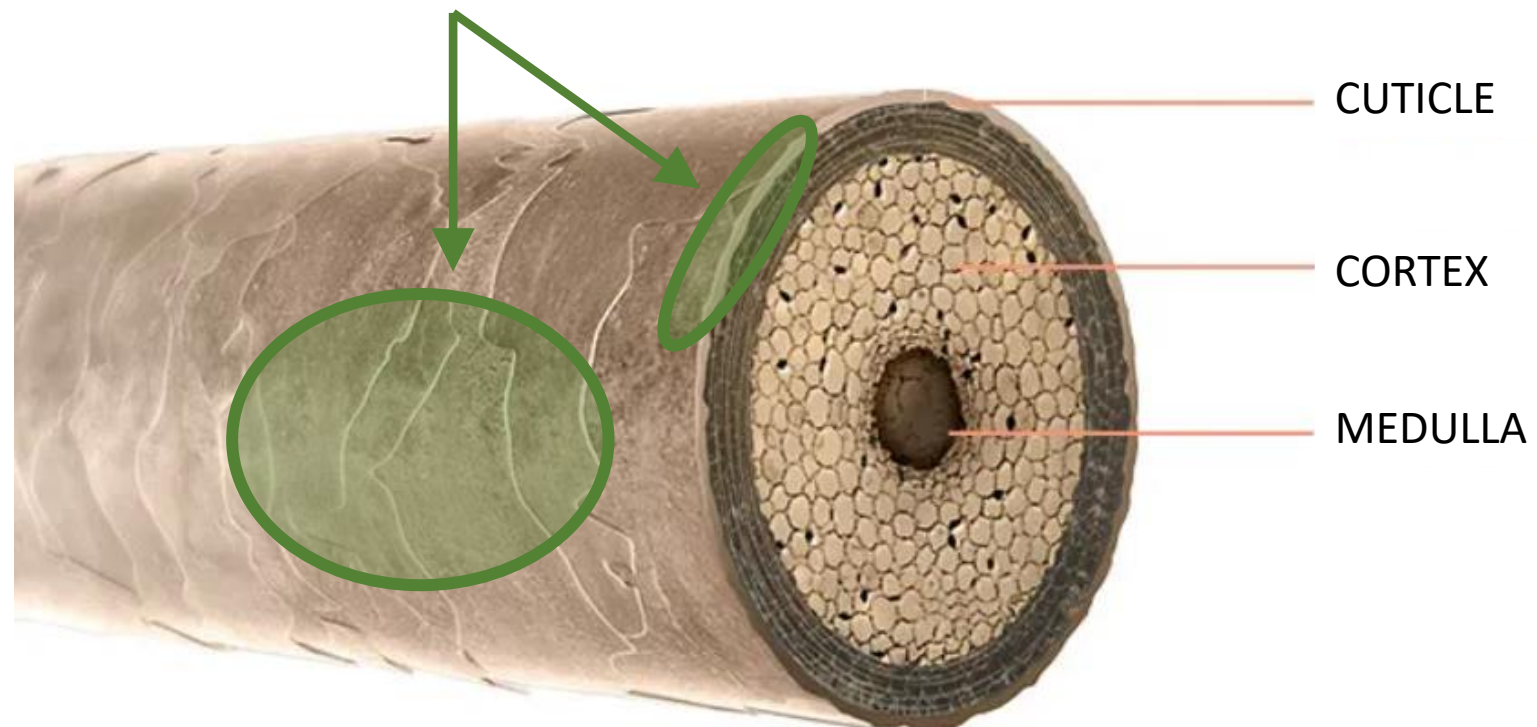
ON REGULAR HAIR CANNABIS ACTS ON AN INTERMEDIATE LEVEL
BETWEEN THE FIBRES AND CUTICLES

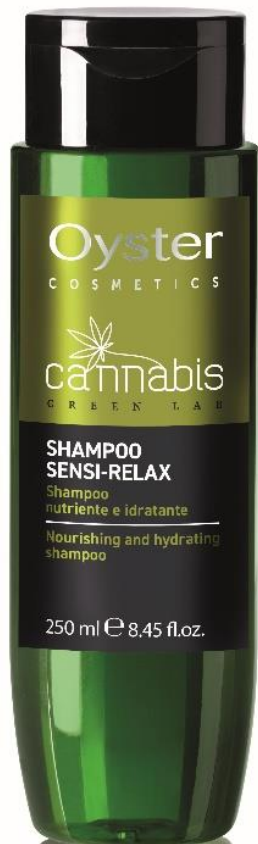
- **Revitalises** and **lowers** the outer cuticle layers, thereby leaving hair soft and smooth
- **Regenerates** the hydrolipidic film that protects hair



ON THICK HAIR CANNABIS ACTS ON THE OUTER CUTICLE LAYERS

- **Smooths** and seals cuticles, leaving hair looking glossier and eliminating frizz
- **Regenerates** the hydrolipidic film that protects hair





250 ml



1000 ml

SENSI-RELAX shampoo

Nourishing and Hydrating

pH: 5.00 – 6.00

DESCRIPTION: gentle cleansing effect, leaves a pleasant feeling of relaxation and well-being thanks to its enveloping fragrance. Enriched with cold-pressed Hemp Seed Oil, it provides a deep, nourishing action, leaving hair soft and incredibly radiant.

FRAGRANCE: musky, woody and enveloping.

TEXTURE: soft and creamy.

SUITABLE FOR: coloured, treated and bleached hair. Particularly effective on damaged hair and stressed scalp.

RESULT: regenerated and stronger hair from roots to ends.

DIRECTIONS: RINSE-OUT – Apply to wet hair – Massage into a soft, rich and pleasant lather – Leave on for a few minutes – Rinse and repeat if necessary.

PRO TIPS: to enhance the illuminating effect, add 3 doses of ILLUMINA-THERAPY OIL. Warm between your hands and apply on hair, working through lengths and ends.

See SALON RITUALS:

- MADNESS
- HAPPINESS
- PEACE



150 ml



1000 ml



NUTRI-ENERGY Mask

Restructuring and Energising

pH: 2.50 – 3.50

DESCRIPTION: restructuring mask with an enveloping fragrance, for a pleasant energising sensation. Hemp seed oil nourishes, detangles and strengthens hair.

FRAGRANCE: musky, woody and enveloping.

TEXTURE: soft and creamy.

SUITABLE FOR: coloured, treated and bleached hair, particularly effective on damaged, dehydrated and dull hair.

RESULT: stronger, plumper, nourished, silky and smooth hair.

DIRECTIONS: RINSE-OUT – Apply to wet hair – leave on for a few minutes – rinse.

BENEFITS: as well as acting as a nourishing mask, it adds body and volume even to short, thin hair.

PRO TIPS: to enhance the illuminating and detangling effect, add 3 doses of ILLUMINA-THERAPY OIL. Warm between your hands and apply on hair, working through lengths and ends.

See SALON RITUALS:

- MADNESS
- HAPPINESS
- PEACE



150 ml

FORCE-EMOTION Serum

Instant nourishing leave-in conditioner

pH: 2.50 – 3.50

DESCRIPTION: instant leave-in conditioner with an enveloping fragrance that gives hair strength and vitality. Hemp seed oil hydrates and nourishes hair, eliminating frizz.

FRAGRANCE: musky, woody and enveloping

TEXTURE: soft and creamy.

SUITABLE FOR: coloured, treated and bleached hair, particularly effective on damaged, dehydrated and dull hair.

RESULT: stronger, thicker, nourished, silky and smooth hair.

DIRECTIONS: LEAVE-IN – Spray onto wet hair.

BENEFITS: as well as acting as an instant conditioner, the FORCE-EMOTION SERUM adds body even to short, thin hair. Ideal to protect from chlorine before swimming.

SEE SALON RITUALS:

- MADNESS
- HAPPINESS
- PEACE



100 ml

ILLUMINA-THERAPY Oil

Glowing effect and silky touch

DESCRIPTION: illuminating oil with an enveloping fragrance that gives a pleasant feeling of well-being. It nourishes intensely without weighing hair down.

FRAGRANCE: musky, woody and enveloping

TEXTURE: soft and creamy.

SUITABLE FOR: coloured, treated and bleached hair. Smoothes and adds gloss, leaving hair looking shiny and full of body without weighing it down.

RESULT: stronger, nourished, silky and smooth hair.

DIRECTIONS: LEAVE-IN – Spray onto washed and towel-dried hair or dry hair. – For very thin hair, spray on hands and apply.

BENEFITS: as well as adding a glossy finish, it gives a NATURAL-LOOKING SHINE to short, thin hair.

PRO TIP: used in combination with the other products, it boosts shine. It acts as a fluidifying medium that accelerates the absorption of hemp oil.

SEE RITUALS: MADNESS - HAPPINESS - PEACE



PROFESSIONAL SIZE



Shampoo

SENSI_RELAX 1000ml



Mask

NUTRI_ENERGY 1000ml

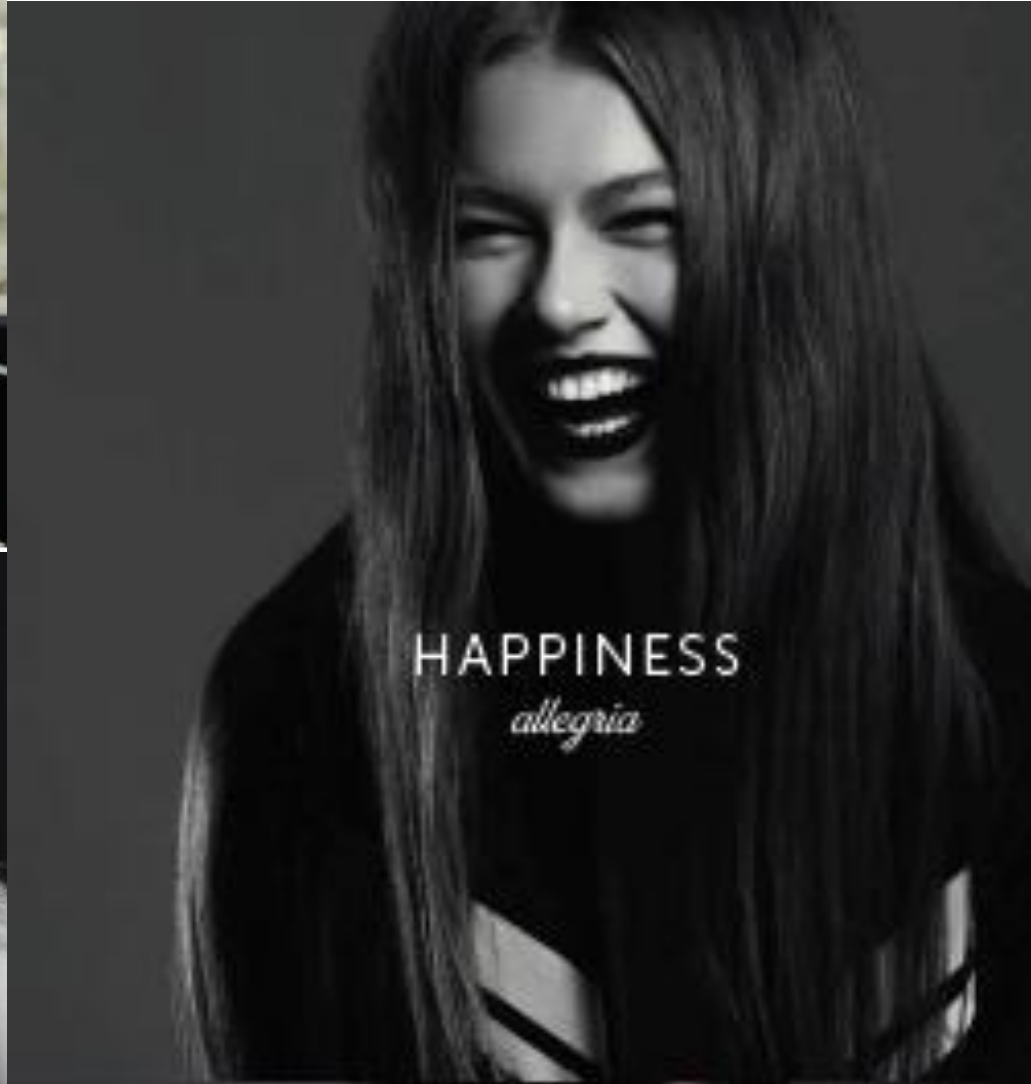
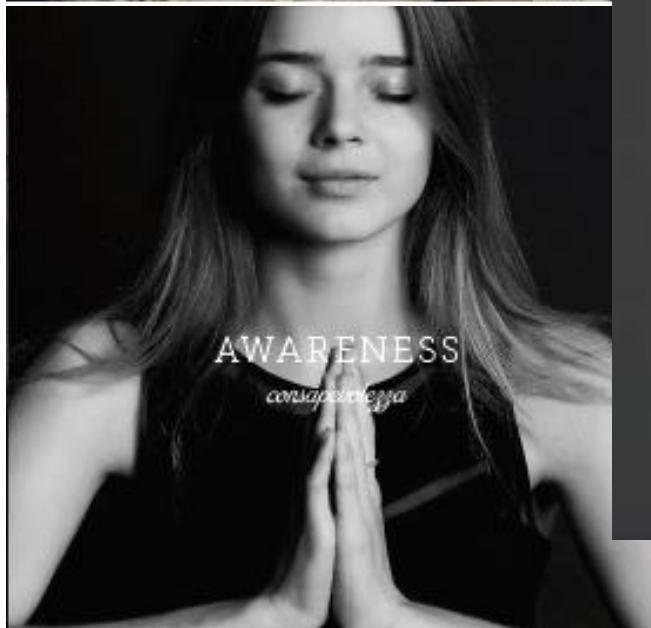
SAMPLE:



Double sachet

SHAMPOO SENSI_RELAX 10ml + MASK NUTRI_ENERGY 15ml

CANNABIS IS A WORLD OF EMOTIONS



A new way of experiencing cosmetics **full of emotions and sensations.**



Enter a world of
senses,
nature,
beauty.

**Transform your Salon Service into
a GLOBAL WELL-BEING experience,
a RELAXING moment FOR BOTH THE BODY AND MIND,
with beneficial effects on:**



energy



mind



body



**3 REGENERATING SALON PROFESSIONAL RITUALS,
FOR COLORED, TREATED AND BLEACHED HAIR.**



Thin hair



Regular hair

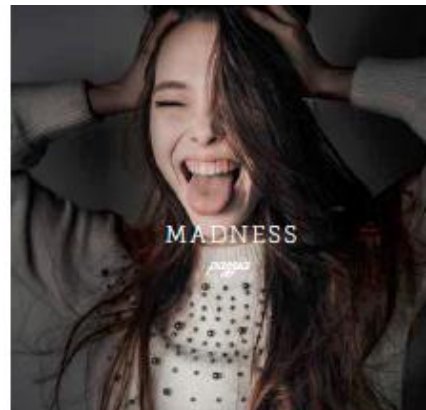


Thick hair



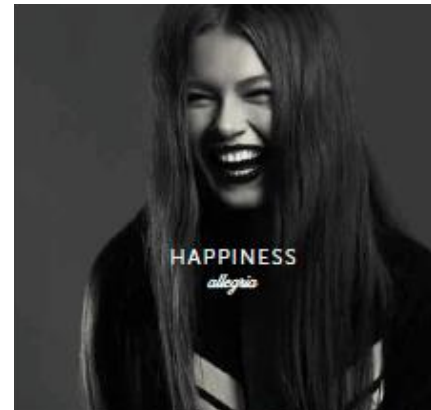
The **RITUALS** make the most of **ILLUMINA-THERAPY OIL**'s properties to **BOOST SHINE** in combination with the other products and as a **FLUIDIFYING MEDIUM** that accelerates the absorption of **Cannabis**, thereby helping **hydrate** hair.

MADNESS



Thin hair

HAPPINESS



Regular hair

PEACE



Thick hair

THE 3 RITUALS

RITUAL	SUITABLE FOR	RESULT	HOW THE TREATMENT ACTS
<p>1. MADNESS TEXTURISING Regenerating and Revitalising Treatment that adds Strength and Volume</p>	<p>THIN HAIR lifeless and with no volume, does not hold style</p>	<p>Hair full of body Full-bodied style</p>	<p>DEEP ACTION:</p> <ul style="list-style-type: none"> • Strengthens keratin structures • Smoothes and seals all cuticle layers • Regenerates the hydrolipidic film that protects hair
<p>2. HAPPINESS STRANGHTENING Regenerating and Revitalising Treatment that adds Support and Vitality</p>	<p>REGULAR HAIR difficult to manage when styling, lifeless, static hair</p>	<p>Strong hair Soft, long-lasting styling</p>	<p>INTERMEDIATE ACTION:</p> <ul style="list-style-type: none"> • Revitalises and lowers outer cuticle layers • Leaves hair soft and smooth • Regenerates the hydrolipidic film that protects hair
<p>3. PEACE ANTI-FRIZZ Regenerating and Revitalising Treatment that smoothes cuticles. Leaves hair Shiny and Silky.</p>	<p>THICK HAIR dull, frizzy and unruly</p>	<p>Smooth and silky hair Frizz-free, radiant styling</p>	<p>ACTS ON OUTER CUTICLE LAYERS:</p> <ul style="list-style-type: none"> • Smoothes and seals cuticles • Eliminates frizz and leaves hair looking glossier • Regenerates the hydrolipidic film that protects hair

MADNESS

Thin hair



STEP BY STEP: MADNESS – thin hair

STEP 1



Wet hair



Pour SENSI-RELAX 10 ml. SHAMPOO into your hand. Add 3 doses of ILLUMINA-THERAPY OIL



Warm between your hands to **mix and activate** the product

STEP 2



Form a soft lather
Massage and apply product to lengths and ends as well
Rinse

STEP 3



Towel dry hair
Warm NUTRI-ENERGY 15 ml MASK between your hands



Apply, massage and comb roots, lengths and ends using your fingers



Leave on for a few minutes and keep on massaging from nape to forehead to add volume.
Rinse



STEP 4



Rough dry with a hair dryer

STEP 5



Warm FORCE- EMOTION SERUM between your hands



Apply by massaging ends, lengths and roots.
Do not rinse

STEP 6



Style
Warm ILLUMINA – THERAPY OIL between your hands and apply to lengths and ends.
Do not rinse



HAPPINESS

Regular hair

SALON RITUALS: HAPPINESS – normal/regular hair

STEP 1



Wet hair



Pour SENSI-RELAX 10 ml. SHAMPOO into your hand.



Warm between your hands to **mix and activate** the product

STEP 2



Form a soft lather
Massage and apply product to lengths and ends as well
Rinse

STEP 3



Towel dry hair
Prepare NUTRI-ENERGY 15 ml MASK
Add 3 doses of ILLUMINA-THERAPY OIL



Apply, massage and comb roots, lengths and ends using your fingers



Leave on for a few minutes and keep on combing and massaging with your fingers



STEP 4



Rinse
Rough dry with a hair dryer

STEP 5



Warm FORCE- EMOTION SERUM between your hands



Apply by massaging ends, lengths and roots.
Do not rinse.

STEP 6



Style
Warm ILLUMINA – THERAPY OIL between your hands and apply to lengths and ends.
Do not rinse.



PEACE

Thick hair

SALON RITUALS: PEACE – thick hair

STEP 1



Wet hair

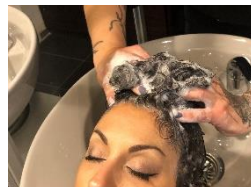


Pour SENSIRELAX 10 ml. SHAMPOO into your hand.
Add 3 doses of ILLUMINA-THERAPY OIL



Warm between your hands to **mix and activate** the product

STEP 2



Form a soft lather
Massage and apply product to lengths and ends as well
Rinse

STEP 3



Towel dry hair
Prepare NUTRI-ENERGY 15 ml. MASK
Add 3 doses of ILLUMINA-THERAPY OIL



Apply, massage and comb roots, lengths and ends using your fingers



Leave on for a few minutes and keep on combing and massaging with your fingers
Rinse



STEP 4



Rough dry with a hair dryer

STEP 5



Warm FORCE- EMOTION SERUM between your hands



Apply by massaging ends, lengths and roots.
Do not rinse.

STEP 6

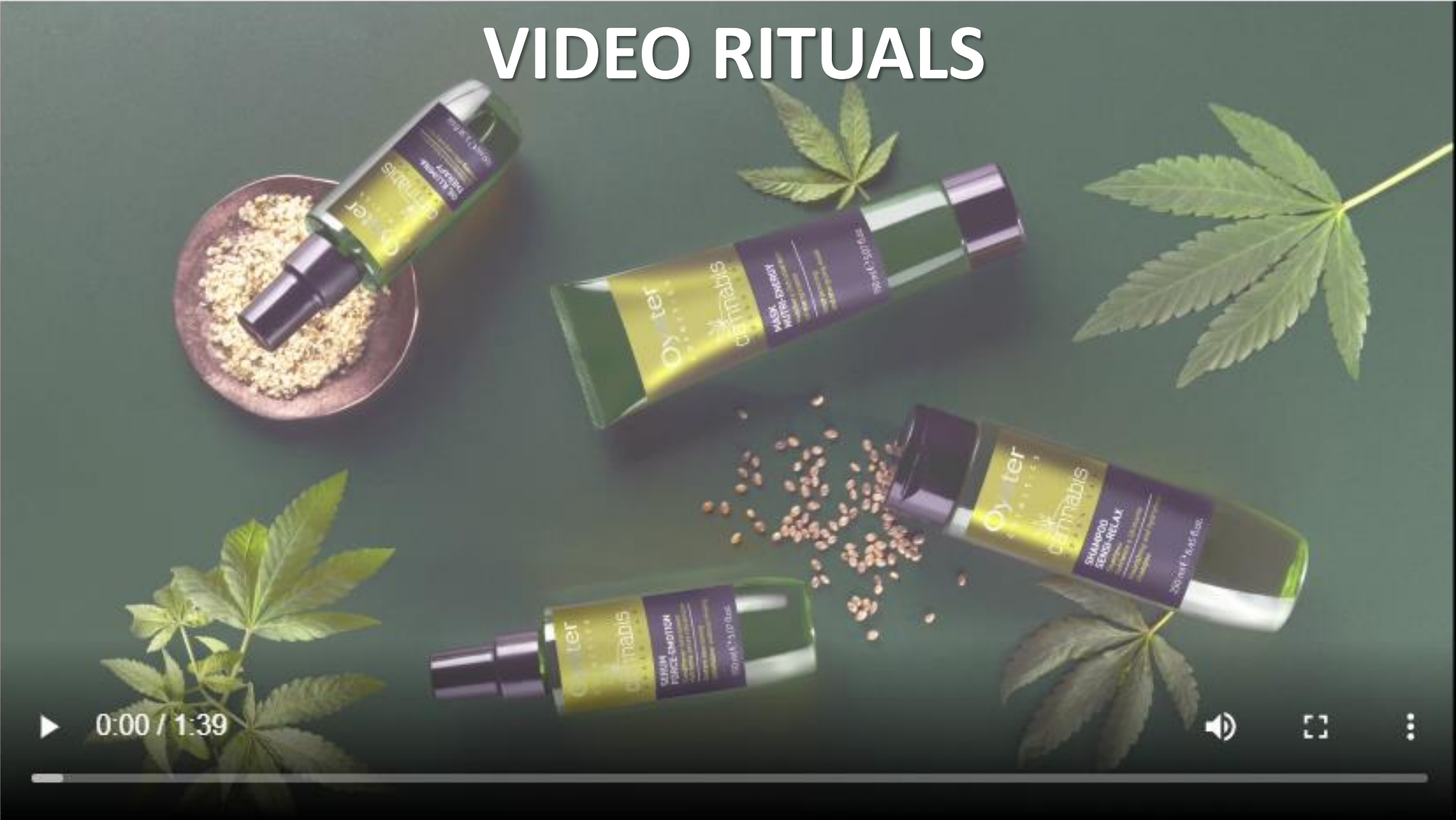


Style
Warm ILLUMINA – THERAPY OIL between your hands and apply to lengths and ends.
Do not rinse.

SALON RITUALS: PEACE – thick hair



VIDEO RITUALS



A CASA - AT HOME - EN CASA

	Cleansing	Conditioning	Completing
<p>CAPELLI SOTTILI Thin hair - Cabello fino</p> <p>SHAMPOO SENSI-RELAX SERUM FORCE-EMOTION OIL ILLUMINA-THERAPY</p>			
<p>CAPELLI MEDI Regular hair - Cabello medio</p> <p>SHAMPOO SENSI-RELAX MASK NUTRI-ENERGY or SERUM FORCE-EMOTION OIL ILLUMINA-THERAPY</p>			
<p>CAPELLI GROSSI Thick hair - Cabello grueso</p> <p>SHAMPOO SENSI-RELAX MASK NUTRI-ENERGY OIL ILLUMINA-THERAPY</p>			

AT HOME

SAMPLE



Double sachet
Shampoo + Mask

COMMUNICATION



STEP BY STEP VIDEO



www.cannabisgreenlab.com

Oyster
COSMETICS

Brand, product... SEARCH

HOME PAGE CHI SIAMO PROFESSIONAL CONSUMER PRIVATE LABEL CONTATTI

Home » Professional Brands » Oyster Professional » Cannabis Green Lab

CANNABIS GREEN LAB

Linea con estratti di Canapa sativa priva di SLES, parabeni, EDTA e PEG (eccetto shampoo). Dermatologicamente testata, 100% vegan.

SCOPRI CANNABIS GREEN LAB

Oyster
COSMETICS

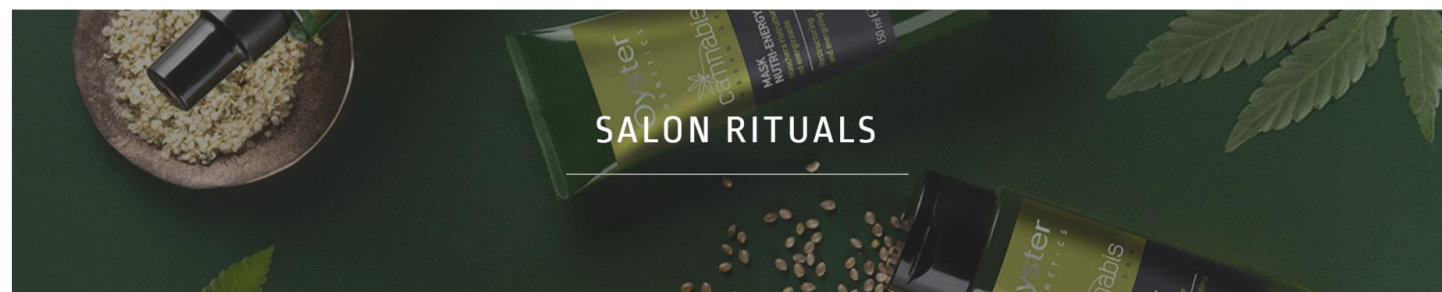
Oyster
COSMETICS
cannabis
GREEN LAB
MASK NUTRI-ENERGIZANTE
Maschera ristrutturante
e energizzante
150 ml e 5.07 fl.oz.

Oyster
COSMETICS
cannabis
GREEN LAB
SHAMPOO SENSI-RELAX
Shampoo
nutriente e lenificante
moisturizing and hydrating
shampoo
250 ml e 8.45 fl.oz.



For Salon Rituals

Home » Professional Brands » Oyster Professional » Cannabis Green Lab » Salon rituals



WEEKLY POST ABOUT CANNABIS RANGE AND SALON RITUALS

The image shows a screenshot of a Facebook post from the official page of Oyster Cosmetics. The post features a promotional graphic for the 'CANNABIS GREEN LAB' product line. The graphic includes the Oyster Cosmetics logo, the text 'CANNABIS GREEN LAB', and a description: 'Linea con estratti di Canapa sativa priva di SLES, parabeni, EDTA e PEG (eccetto shampoo). Dermatologicamente testata, 100% vegan.' Below the text is a button that says 'SCOPRI CANNABIS GREEN LAB'. The background of the graphic shows various Oyster Cosmetics products, including a 'MASK ENERGY' tube and a 'SHAMPOO SENSI-RELAX' bottle, along with cannabis leaves and seeds.

facebook

Accedi

Non ricordi più come accedere all'account?

**Oyster
COSMETICS**

Oyster Cosmetics
@oystercosmeticsofficial

Home

Informazioni

Post

Recensioni

Video

Foto

Community

Mi piace Condividi

Contattaci

Invia un messaggio

Post

Oyster Cosmetics
27 gennaio · 🌐

Oyster Cosmetics
Bellezza, cosmetici e cura del corpo a Castiglione delle Stiviere
Chiude tra 35 minuti



1

RITUAL MADNESS

pigiata - intensa

CAPELLI SOTTILI

Thin hair - Capelli fini

Trattamento rigenerante, che dona consistenza e volume.
RESULTADO: CAPELLO CARIOSO E RIDUA. RICA DI VOLUME. REGENERATING TREATMENT, WHICH GIVES TEXTURE AND VOLUME. RESULT: HAIR WITH A FULL BODY AND RICH VOLUME.
 Tratamiento regenerante, que aporta textura y volumen. RESULTADO CABELLO CON CUERPO Y VOLUMEN AL PEINADO.

Scaldare tra le mani 10 ml SHAMPOO SENSITIVE RELAX + 3 dosi GEL ILLUMINA-THERAPY. Applicare. Massaggiare. Risciacquare.

Warm in your hands 10 ml SHAMPOO SENSITIVE RELAX + 3 doses GEL ILLUMINA-THERAPY. Apply. Massage. Rinse.

Calore 10 ml SHAMPOO SENSITIVE RELAX + 3 dosi GEL ILLUMINA-THERAPY en las manos. Aplicar. Masajear. Enjuagar.

Scaldare tra le mani 15 ml MASK NUTRI-ENERGY. Applicare. Risciacquare.

Warm in your hands 15 ml MASK NUTRI-ENERGY. Apply. Rinse.

Calore 15 ml MASK NUTRI-ENERGY en las manos. Aplicar. Enjuagar.

Pre asciugare i capelli. Scaldare tra le mani 10 ml SERUM PROTECTIVE EMOTION. Applicare. Non risciacquare.

Partially dry your hair. Warm in your hands 10 ml SERUM PROTECTIVE EMOTION. Apply. Do not rinse.

Seque parcialmente el cabello. Calentar entre las manos 10 ml SERUM PROTECTIVE EMOTION en las manos. Aplicar. No enjuagar.

Dopo la piega, scaldare tra le mani 10 ml OIL ILLUMINA-THERAPY. Applicare. Non risciacquare.

After styling. Warm in your hands 10 ml OIL ILLUMINA-THERAPY. Apply. Do not rinse.

Después del peinado, calentar 10 ml OIL ILLUMINA-THERAPY en las manos. Aplicar. No enjuagar.

2

RITUAL HAPPINESS

allegria - allegria

CAPELLI MEDI

Regular hair - Capelli medios

Trattamento rigenerante e rivitalizzante, che dona vigore.
RESULTADO CABELLO CONSISTENTE. RIDUA. NOBILIDAD E DURABILIDAD. REGENERATING AND REVITALIZING TREATMENT, WHICH GIVES BODY TO THE HAIR. RESULT: ENERGIZED AND SOFT HAIR. LONG LASTING STYLING.
 Tratamiento regenerador y revitalizante, que aporta vigor. RESULTADO CABELLO FLEXIBLE, SUAVE Y PEINADO DURADERO.

Scaldare tra le mani 10 ml SHAMPOO SENSITIVE RELAX + 3 dosi GEL ILLUMINA-THERAPY. Applicare. Massaggiare. Risciacquare.

Warm in your hands 10 ml SHAMPOO SENSITIVE RELAX + 3 doses GEL ILLUMINA-THERAPY. Apply. Massage. Rinse.

Calore 10 ml SHAMPOO SENSITIVE RELAX + 3 dosi GEL ILLUMINA-THERAPY en las manos. Aplicar. Masajear. Enjuagar.

Miscelare 15 ml MASK NUTRI-ENERGY + 3 dosi GEL ILLUMINA-THERAPY. Applicare. Risciacquare.

Mix 15 ml MASK NUTRI-ENERGY + 3 doses GEL ILLUMINA-THERAPY. Apply. Rinse.

Mezclar 15 ml MASK NUTRI-ENERGY + 3 dosis GEL ILLUMINA-THERAPY. Aplicar. Enjuagar.

Pre asciugare i capelli. Scaldare tra le mani 10 ml SERUM PROTECTIVE EMOTION. Applicare. Non risciacquare.

Partially dry your hair. Warm in your hands 10 ml SERUM PROTECTIVE EMOTION. Apply. Do not rinse.

Seque parcialmente el cabello. Calentar entre las manos 10 ml SERUM PROTECTIVE EMOTION en las manos. Aplicar. No enjuagar.

Dopo la piega, scaldare tra le mani 10 ml OIL ILLUMINA-THERAPY. Applicare. Non risciacquare.

After styling. Warm in your hands 10 ml OIL ILLUMINA-THERAPY. Apply. Do not rinse.

Después del peinado, calentar 10 ml OIL ILLUMINA-THERAPY en las manos. Aplicar. No enjuagar.

3

RITUAL PEACE

tranquillità - pigia

CAPELLI GROSSI

Thick hair - Capelli gruesos

Trattamento rigenerante e rilassante che disciplina la cuticola.
RESULTADO: CAPELLO SILENCIOSO. FLEXIBLE. ILLUMINOSO. REGENERATING AND RELAXING TREATMENT THAT DISCIPLINES THE CUTICLE. RESULT: SILKY HAIR, FLESH AND BRIGHT STYLING.
 Tratamiento regenerador y relajante que disciplina la cutícula. RESULTADO: CABELLO SILENCIOSO Y BRILLANTE. PEINADO FLUIDO Y SUAVE.

Scaldare tra le mani 10 ml SHAMPOO SENSITIVE RELAX + 3 dosi GEL ILLUMINA-THERAPY. Applicare. Massaggiare. Risciacquare.

Warm in your hands 10 ml SHAMPOO SENSITIVE RELAX + 3 doses GEL ILLUMINA-THERAPY. Apply. Massage. Rinse.

Calore 10 ml SHAMPOO SENSITIVE RELAX + 3 dosi GEL ILLUMINA-THERAPY en las manos. Aplicar. Masajear. Enjuagar.

Miscelare 15 ml MASK NUTRI-ENERGY + 3 dosi GEL ILLUMINA-THERAPY. Applicare. Risciacquare.

Mix 15 ml MASK NUTRI-ENERGY + 3 doses GEL ILLUMINA-THERAPY. Apply. Rinse.

Mezclar 15 ml MASK NUTRI-ENERGY + 3 dosis GEL ILLUMINA-THERAPY. Aplicar. Enjuagar.

Pre asciugare i capelli. Scaldare tra le mani 10 ml SERUM PROTECTIVE EMOTION. Applicare. Non risciacquare.

Partially dry your hair. Warm in your hands 10 ml SERUM PROTECTIVE EMOTION. Apply. Do not rinse.

Seque parcialmente el cabello. Calentar entre las manos 10 ml SERUM PROTECTIVE EMOTION en las manos. Aplicar. No enjuagar.

Dopo la piega, scaldare tra le mani 10 ml OIL ILLUMINA-THERAPY. Applicare. Non risciacquare.

After styling. Warm in your hands 10 ml OIL ILLUMINA-THERAPY. Apply. Do not rinse.

Después del peinado, calentar 10 ml OIL ILLUMINA-THERAPY en las manos. Aplicar. No enjuagar.

BROCHURE DEDICATED TO RITUALS

Cod. PROMO000298

BROCHURE DEDICATED TO RITUALS















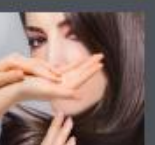


QR CODE



THE RANGE

STEP BY STEP RITUALS

 <p>1 RITUAL MADNESS <i>passia - beata</i></p>	 <p>2 RITUAL HAPPINESS <i>allegria - allegria</i></p>	 <p>3 RITUAL PEACE <i>tranquilla - paz</i></p>
<p>CAPELLI SOTTILI Thin hair - Cabello fino</p>	<p>CAPELLI MEDI Regular hair - Cabello medio</p>	<p>CAPELLI GROSSI Thick hair - Cabello grueso</p>
<p>Trattamento rigenerante, che dona consistenza e volume. RISULTATO: CAPELLO CORPOSO E PIEGA RICCA DI VOLUME. Regenerating treatment, which gives texture and volume. RESULT: HAIR WITH A FULL BODY AND RICH VOLUME. Tratamiento regenerador, que aporta textura y volumen. RESULTADO: CABELLO CON CUERPO Y VOLUMEN AL PEINADO.</p>	<p>Trattamento rigenerante e rivitalizzante, che dona vigore. RISULTATO: CAPELLO CONSISTENTE, PIEGA MORBIDA E DURATURA. Regenerating and revitalizing treatment, which gives body to the hair. RESULT: ENERGIZED AND SOFT HAIR, LONG LASTING STYLING. Tratamiento regenerador y revitalizante, que aporta vigor. RESULTADO: CABELLO FLEXIBLE, SUAVE Y PEINADO DURADERO.</p>	<p>Trattamento rigenerante e rilassante che disciplina la cuticola. RISULTATO: CAPELLO SETOSO, PIEGA FLUIDA E LUMINOSA. Regenerating and relaxing treatment that disciplines the cuticle. RESULT: SILKY HAIR, FLUID AND BRIGHT STYLING. Tratamiento regenerador y relajante que disciplina la cutícula. RESULTADO: CABELLO SEDOSO Y BRILLANTE, PEINADO FLUIDO Y SUAVE.</p>
<p>Scaldare tra le mani 10 ml SHAMPOO SENSI-RELAX + 3 dosi OIL ILLUMINA-THERAPY. Applicare. Massaggiare. Risciacquare. <i>Warm in your hands 10 ml SHAMPOO SENSI-RELAX + 3 doses OIL ILLUMINA-THERAPY. Apply. Massage. Rinse.</i></p> 	<p>Scaldare tra le mani 10 ml SHAMPOO SENSI-RELAX + 3 dosi OIL ILLUMINA-THERAPY. Applicare. Massaggiare. Risciacquare. <i>Warm in your hands 10 ml SHAMPOO SENSI-RELAX + 3 doses OIL ILLUMINA-THERAPY. Apply. Massage. Rinse.</i></p> 	<p>Scaldare tra le mani 10 ml SHAMPOO SENSI-RELAX + 3 dosi OIL ILLUMINA-THERAPY. Applicare. Massaggiare. Risciacquare. <i>Warm in your hands 10 ml SHAMPOO SENSI-RELAX + 3 doses OIL ILLUMINA-THERAPY. Apply. Massage. Rinse.</i></p> 
<p>Scaldare tra le mani 15 ml MASK NUTRI-ENERGY + 3 dosi OIL ILLUMINA-THERAPY. Applicare. Pettinare. Risciacquare. <i>Warm in your hands 15 ml MASK NUTRI-ENERGY + 3 doses OIL ILLUMINA-THERAPY. Apply. Comb. Rinse.</i></p> 	<p>Miscelare 15 ml MASK NUTRI-ENERGY + 3 dosi OIL ILLUMINA-THERAPY. Applicare. Pettinare. Risciacquare. <i>Mix 15 ml NUTRI-ENERGY MASK + 3 doses OIL ILLUMINA-THERAPY. Apply. Comb. Rinse.</i></p> 	<p>Miscelare 15 ml MASK NUTRI-ENERGY + 3 dosi OIL ILLUMINA-THERAPY. Applicare. Pettinare. Risciacquare. <i>Mix 15 ml NUTRI-ENERGY MASK + 3 doses OIL ILLUMINA-THERAPY. Apply. Comb. Rinse.</i></p> 
<p>Pre-asciugare i capelli. Scaldare tra le mani SERUM FORCE-EMOTION. Applicare. Non risciacquare. <i>Partially dry your hair. Warm in your hands SERUM FORCE-EMOTION. Apply. Do not rinse.</i></p> 	<p>Pre-asciugare i capelli. Scaldare tra le mani SERUM FORCE-EMOTION. Applicare. Non risciacquare. <i>Partially dry your hair. Warm in your hands SERUM FORCE-EMOTION. Apply. Do not rinse.</i></p> 	<p>Pre-asciugare i capelli. Scaldare tra le mani SERUM FORCE-EMOTION. Applicare. Non risciacquare. <i>Partially dry your hair. Warm in your hands SERUM FORCE-EMOTION. Apply. Do not rinse.</i></p> 
<p>Dopo la piega, scaldare tra le mani OIL ILLUMINA-THERAPY. Applicare. Non risciacquare. <i>After styling, warm in your hands OIL ILLUMINA-THERAPY. Apply. Do not rinse.</i></p> 	<p>Dopo la piega, scaldare tra le mani OIL ILLUMINA-THERAPY. Applicare. Non risciacquare. <i>After styling, warm in your hands OIL ILLUMINA-THERAPY. Apply. Do not rinse.</i></p> 	<p>Dopo la piega, scaldare tra le mani OIL ILLUMINA-THERAPY. Applicare. Non risciacquare. <i>After styling, warm in your hands OIL ILLUMINA-THERAPY. Apply. Do not rinse.</i></p> 

CATALOGUE

PROMO000264



LEAFLET

PROMO000265



INSTITUTIONAL EXPO WITH CANNABIS CROWNER

Base
Crowner

Cod. PROMO000286
Cod. PROMO000290





cannabis

G R E E N L A B

www.cannabisgreenlab.com

